

IMAGEVISION MODULAR CONSOLES

"RECEIVING INSTRUCTIONS" & "ASSEMBLY INSTRUCTIONS" .PDF FILES ARE AVAILABLE
ON "DOWNLOADS" TAB AT IMAGEVISIONINC.COM

ASSEMBLY TOOLS REQUIRED

1. (1) 10mm OPEN END WRENCH (WORK SURFACE DRAW BOLTS)
2. (2) 7/16" COMBINATION WRENCHES
3. (2) 9/16" WRENCHES
4. (1) 1/2" WRENCH
5. (2) 3/8" WRENCHES
6. SLOTTED SCREW DRIVER (FOR ALIGNING HOLES)
7. DRILL WITH PHILLIPS DRIVER BIT
8. PHILLIPS SCREW DRIVER
9. POCKET KNIFE
10. LEVEL

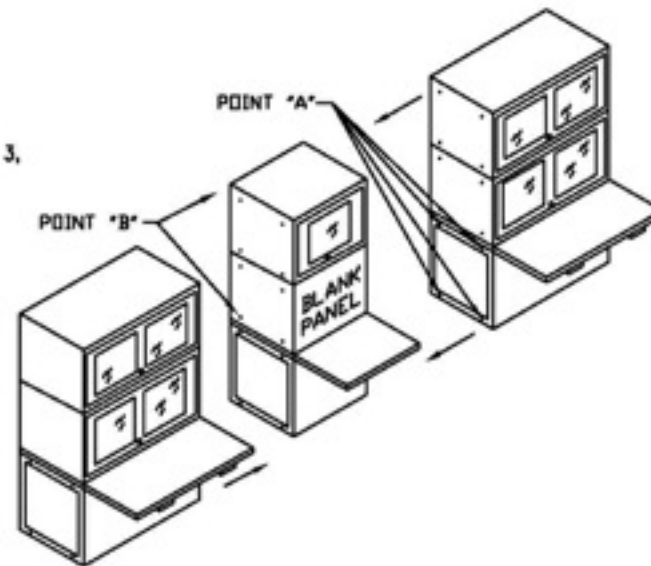
REVIEW "RECEIVING INSTRUCTIONS" & REMOVE CONSOLE UNITS FROM PALLETS

Contact Us For Assistance:

STEPS FOR ASSEMBLING MULTIPLE CONSOLE UNITS:

1. TRIM OUT HARDWARE SLOTS ON ADJACENT WORK SURFACES.
SEE DETAIL "C" ON SHEET 3 FOR INSTRUCTIONS.
 2. SLIDE ALL CABINETS TOGETHER TIGHTLY IN THE PROPER SEQUENCE. CONSOLES ARE TAGGED WITH NUMBERS LEFT TO RIGHT BY SHIPPING DEPARTMENT. INSTRUCTIONS FOR INSTALLING OPTIONAL WEDGES ARE FOUND ON SHEET 4.
 3. ADJUST LEVELERS ON FLOOR TO LEVEL ALL CABINETS STARTING AT THE CENTER OF THE ASSEMBLY AND WORKING OUTWARD.
 4. USING #10-32 BOLTS SUPPLIED LOOSELY FASTEN BASE FRAMES TOGETHER AT (4) POINTS SHOWN AT POINT "A."
 5. LOOSELY BOLT MONITOR HOUSINGS TOGETHER AT DETAIL "B" STARTING AT THE CENTER OF THE ASSEMBLY AND WORKING OUTWARD.
 6. BOLT WORK SURFACES TOGETHER FOLLOWING INSTRUCTIONS ON SHEET 3, STARTING AT THE CENTER OF THE ASSEMBLY AND WORKING OUTWARD.
 7. RECHECK LEVEL AND TIGHTEN WORK SURFACE BOLTS FIRST, THEN TIGHTEN ALL CABINET BOLTS BEGINNING AT THE CENTER OF THE ASSEMBLY AND WORKING OUTWARD.
- ***NOTE - ALL BOLTS ARE INSERTED FROM INSIDE CABINETS. REAR PANELS MAY BE REMOVED FOR EASIER ASSEMBLY.

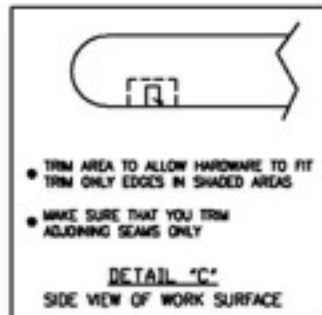
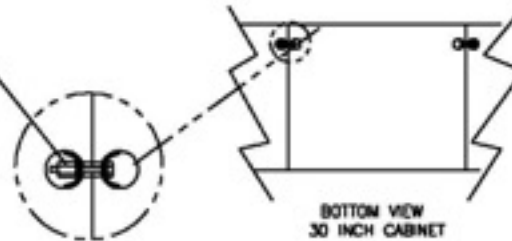
CAUTION: DO NOT TIGHTEN ANY BOLTS UNTIL ALL UNITS ARE LEVELED AND ALL BOLTS ARE IN PLACE.



Contact Us For Assistance:

WORK SURFACE PREP & ASSEMBLY

DRAW BOLT USE 3/8" WRENCH TO TIGHTEN
CAUTION! DO NOT OVER TIGHTEN

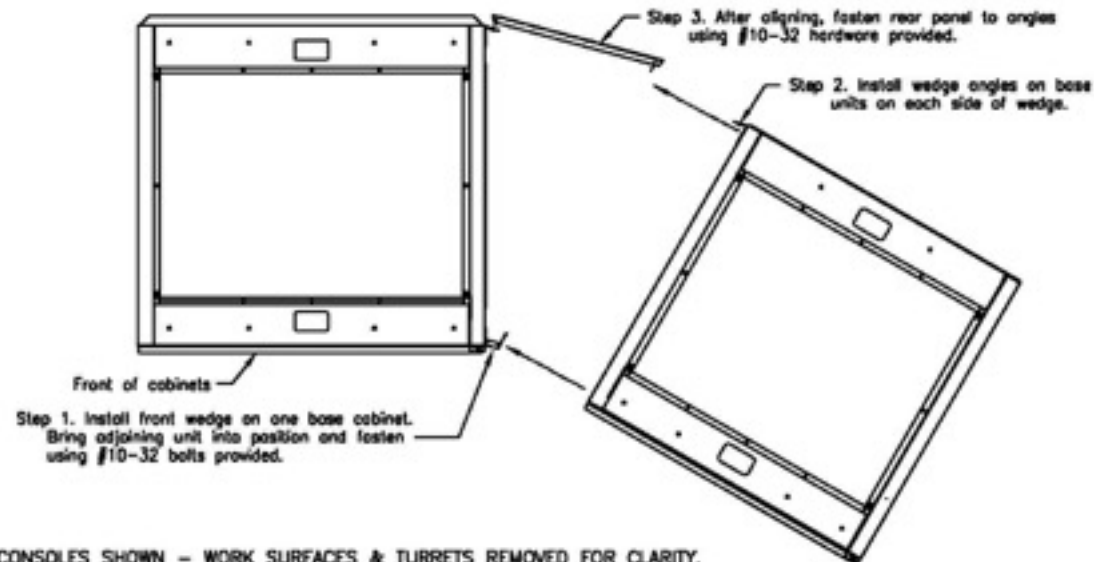


NOTES:

1. DO NOT TIGHTEN BOLTS UNTIL ALL COMPONENTS ARE BOLTED TOGETHER.
2. LINE UP AND TIGHTEN ALL WORK SURFACES BEFORE TIGHTENING ANY CABINET BOLTS.
3. START TO TIGHTEN BOLTS IN THE CENTER OF THE ASSEMBLY AND WORK TOWARD EACH END.
4. DO NOT FORGET TO TRIM OUT WORK SURFACES AS SHOWN IN DETAIL "C"

Contact Us For Assistance:

STANDARD WEDGE ASSEMBLY



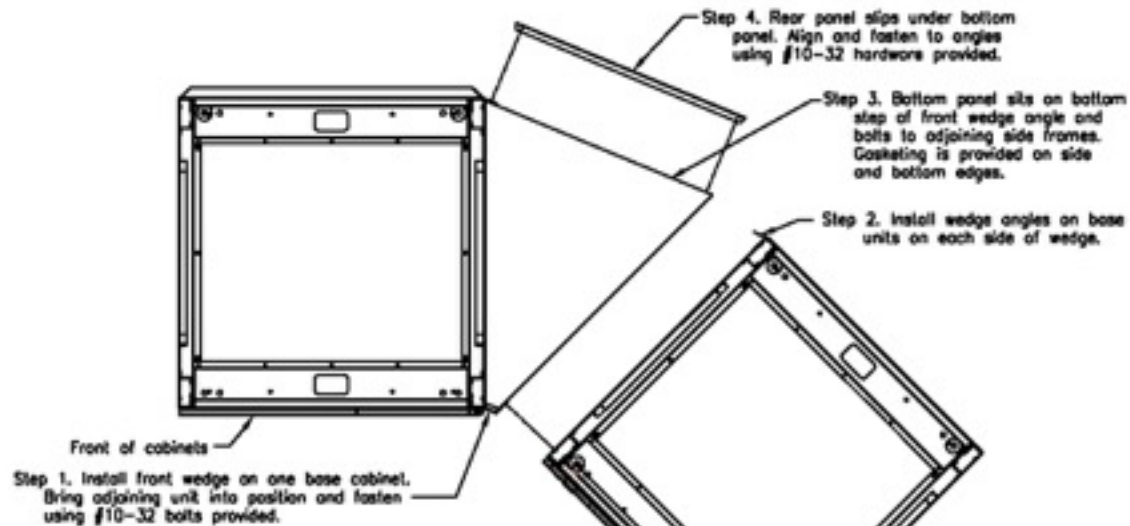
NOTES:

PLAN VIEW OF TWO CONSOLES SHOWN – WORK SURFACES & TURRETS REMOVED FOR CLARITY.

1. ALIGN AND LEVEL ALL UNITS BEFORE INSTALLING HARDWARE.
2. COMPLETE HARDWARE INSTALLATION IN FRONT WEDGE BEFORE DOING REAR WEDGE ASSEMBLY. HARDWARE FOR FRONT WEDGE INSTALLS FROM INSIDE WEDGE AREA INTO CAPTIVE NUTS IN SIDE PANELS OF ADJOINING BASES.
3. REAR PANEL HARDWARE INSTALLS FROM REAR OF CABINET INTO CAPTIVE NUTS IN REAR ANGLES.
4. SLOTS PERMIT MINOR IN AND OUT ADJUSTMENT FOR THE MOST PLEASING ALIGNMENT.

Contact Us For Assistance:

GASKETED WEDGE ASSEMBLY



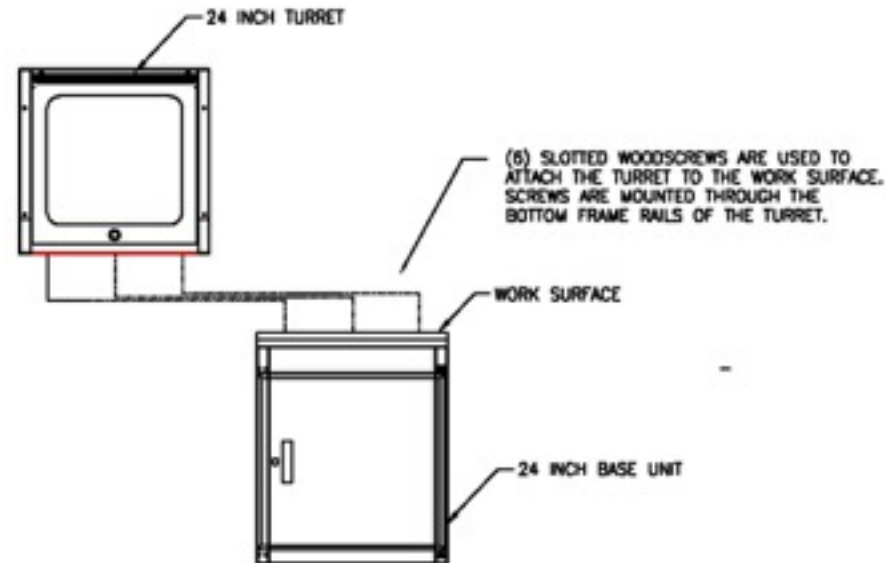
NOTES:

1. ALIGN AND LEVEL ALL UNITS BEFORE INSTALLING HARDWARE.
2. COMPLETE HARDWARE INSTALLATION IN FRONT OF WEDGE BEFORE DOING REAR WEDGE ASSEMBLY. HARDWARE FOR FRONT WEDGE INSTALLS FROM INSIDE WEDGE AREA INTO CAPTIVE NUTS IN SIDE PANELS OF ADJOINING BASES.
3. REAR PANEL HARDWARE INSTALLS FROM REAR OF CABINET INTO CAPTIVE NUTS IN REAR ANGLES.
4. SLOTS PERMIT MINOR IN AND OUT ADJUSTMENT FOR THE MOST PLEASING ALIGNMENT.

Contact Us For Assistance:

INSTRUCTION FOR CARRYING TIERED CONSOLES THROUGH NARROW DOORWAYS

NOTE: TO MOVE 1-TIER OR 2-TIER CONSOLES THRU 30 INCH DOORWAYS, THE MONITOR HOUSINGS MUST BE REMOVED FIRST. THEN CARRY OR USE A DOLLY TO MOVE THE TIERS THROUGH THE DOOR. THEN TURN EACH BASE UNIT ON ITS BACK ON TO A 4 WHEEL DOLLY AND MOVE THROUGH THE DOORWAY PER THE INSTRUCTIONS BELOW:



Contact Us For Assistance: