

# AgileVIEW®



Control Consoles for Flat Screens

[www.imagevisionconsoles.com](http://www.imagevisionconsoles.com)

# Project Photo Album

AgileVIEW

Complete  
Control Console Solutions

[Learn more...](#)

All-Steel Construction   Looks better Longer  
Modular Unit Design   Future Flexibility  
Custom Colors   Match Your Decor

Laminated Work Surfaces   Powder Coat Finish   Integral Cable Management  
Drawers   Control Enclosures   Bookcases   Slide-Out Trays   Sub-Panels   EIA Equipment Racks

• **Control Rooms**   • **Security Furniture**   • **Command Centers**   • **Medical Imaging Solutions**

# Our Product Families



## AgileVIEW<sup>®</sup>



**Control Consoles**  
tables and desk bases with fixed tops  
1, 2, or 3 screens high

## AbleVIEW<sup>®</sup>



## ErgonomicVIEW<sup>®</sup>



dual or single top  
adjustable height workstations  
provide optimum  
ergonomics



*"Everything was great! The control room furniture we ordered was well constructed. Bill T. worked with me over a period of two years to get the control room design together and implemented. Thanks Bill for your patience."*

*- Project Engineer, Eastman Specialty Chemical control room furniture and control room design project in chemical plant*

*"What I liked most is your consoles' rugged industrial design. Nothing disappointed me about either your product or service."*

*- Sr. Engineer, Louisville Electric; Cane Run Station 2-Tier operator consoles*

*"Your console units came pre-assembled; hardly any site work.*

*Easy to mount computer equipment, LCD monitors, etc.*

*We got a quick response from ImageVision and your control consoles are ALWAYS DELIVERED ON SCHEDULE.*

*You can rely on ImageVision to meet project deadlines!"*

*- Sr. Controls Engineer, Langtree LTD; 2-Tier control room consoles*

*"I like the functionality of your consoles and the ability to accommodated additional process control equipment. Nothing about the console or your sales and support services disappointed me!"*

*- Mill Supervisor, Grain Processing Facility; 3-Tier control console*

*"Our plant mgr is delighted with the 3-tiered operator control console.*

*He enjoys showing off the new control room to visitors."*

*- Eng. Mgr., PCS Nitrogen; has two styles of our console furniture*

*"The lab furniture arrived and it looks great. We are most pleased!"*

*- Proj. Eng., Aerospace Test Lab; Technical furniture installation*

*"I have already given your name to several visitors to our plant.*

*They are really impressed with our control room furniture."*

*- Eng. Planner, Conoco-Phillips; DCS computer console*

*"I think your control consoles are not only functional, but look very professional as well; esthetically pleasing Both the product and support were impeccable. Your sales representative went above and beyond the call of duty to get the control consoles delivered in record time in order to meet the needs of my customer."*

*- Project Manager, Systems Integrator control consoles used in a Carbon Black production facility*

*We had some corporate folks come through last week for a visit. They toured our control room at the power and recovery facility and noted how good the consoles looked. They ask for brochures and a contact so I gave him your info."*

*- Project Engineer, Large Paper Company control consoles*

*"Sturdy, good design with a streamlined appearance.*

*Debbie B. has been absolutely wonderful to work with from the day I took over the project. She has been extremely helpful in providing quick feedback and information when I needed it.. She worked hard to get me up to speed on our previous project purchases and insured our new addition items would match.*

*I wish all of our dealings with vendors were this easy!"*

*- Project Engineer, Architect of the Capital steam boiler control console furniture*

*"After all the dust settled, we are very happy with our console furniture. We will be ordering at least two more consoles in the next six months."*

*- Project Engineer, Northrop Grumman Aerospace Technical furniture*

*"ImageVision's modular operator consoles organized our work space and has increased the efficiency of our operations personnel."*

*- Pipeline Ops, INEOS USA; 2-Tier computer console furniture*

*"The computer console desks fit perfectly in the allotted space, looks great, and is extremely functional. The most impressive thing is that you managed to beat the short lead time. Thanks for all your efforts."*

*Project Mgr, Systems Integrator for Consolidated Coal's 2-tier control console*

*"What did I like? Style and the way the computer furniture revamped our control rooms with a modern touch. Assembly of the units was easy and the availability of additional cable way space was a plus. The extra space on desk tops allowed us to add PC's for operations use.*

*ImageVision support made the project easy on this end. Everything on the project from estimates to installation went smoothly."*

*Project Engineer, Large Paper Company with 2-tier operator consoles*



WATCH VIDEO

ADDITIONAL  
CONSOLE OPTIONS

— See Separate *OPTIONS* Photo Album —

**AgileVIEW<sup>®</sup>**

 **ImageVision**  
Modular Consoles<sup>®</sup>

## Worldwide Shipping Services from Houston or Magnolia, TX



Export crating & document preparation



Louvered rear panels. Cabinets can have either plain or louvered doors or panels on front or back



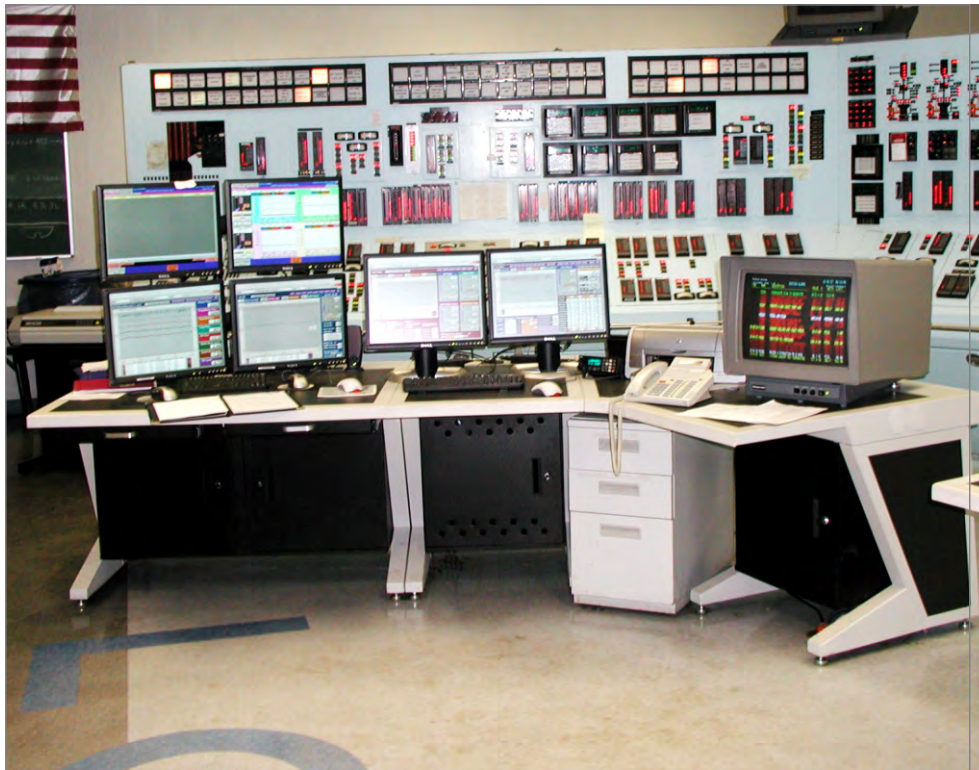
From AutoCAD plans, to fabrication and freight forwarding services. We deliver complete control room console solutions - around the globe.



**Saudi Electric Company - Jizan, Kingdom of Saudi Arabia**

Control Room Console  
Jizan Central Power Station Extension Project

## Desk Control Consoles with CRTs and Ergotron Quad Desk Stand



AgileVIEW is designed to accommodate either LCD or CRT monitors.  
On this project, the desk control consoles were supplied with Ergotron Quad desk stand



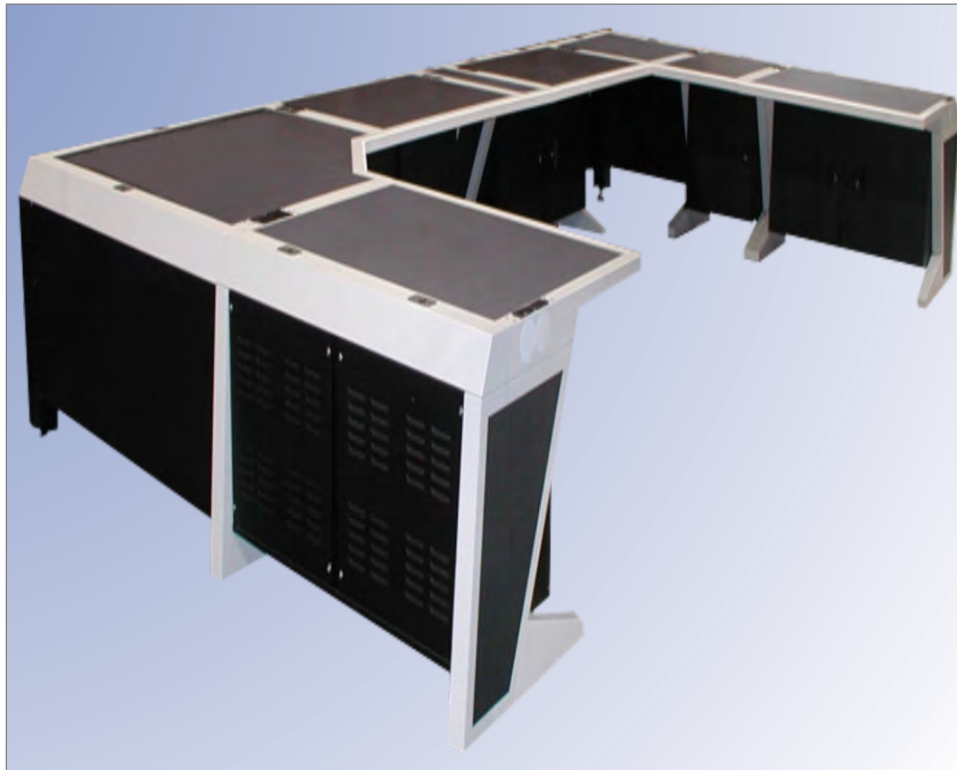
You can use your own source of file & supply drawers,  
or we can provide them in any console cabinet door position



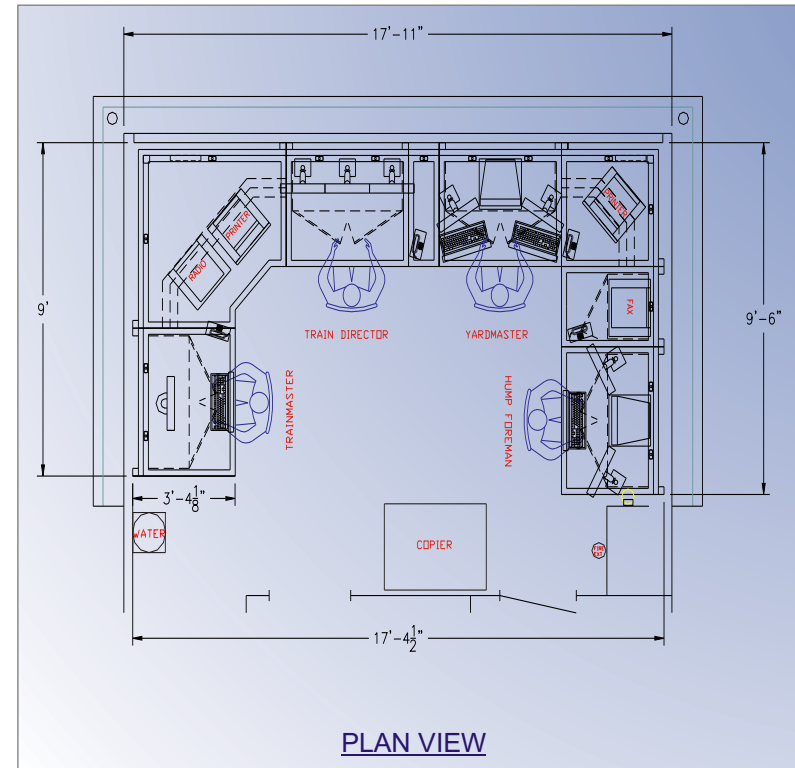
## LCRA Fayette Power Plant - La Grange, TX

Desk Control Consoles  
Turbine Control Stations in Fayette Power Unit #3

## We Have 90° Corner Options To Fit Your Command Center Console Floor Plan



Command center console with Large 90 degree Corner Table with overall size is 60.2in. X 60.2in.; has beveled inside corner for ease of access



Small 90 degree Corner Table size is 40.2in. X 40.2in. and has square inside corner



## We Have 90° Corner Options: Large Beveled - Front Table with Quad Desk Stands



Ergotron Quad Desk Stands allow 10 LCD screens to be clustered around the large, beveled-front, 90 degree corner table



Top photo shows Bookcases installed on Desk units  
Bottom is another Large Beveled-Front 90 Degree Corner Table view



**VALERO - Beaumont, TX**  
Large Beveled-Front 90 Degree Corner Table & Bookcases  
Petroleum Pipeline - Lukas Terminal Control Room Furniture

## Modular Computer Furniture with Rear Cabinet Extensions



Ergotron Dual Vertical Deskstands provided to maximize compacting of screen mounting space

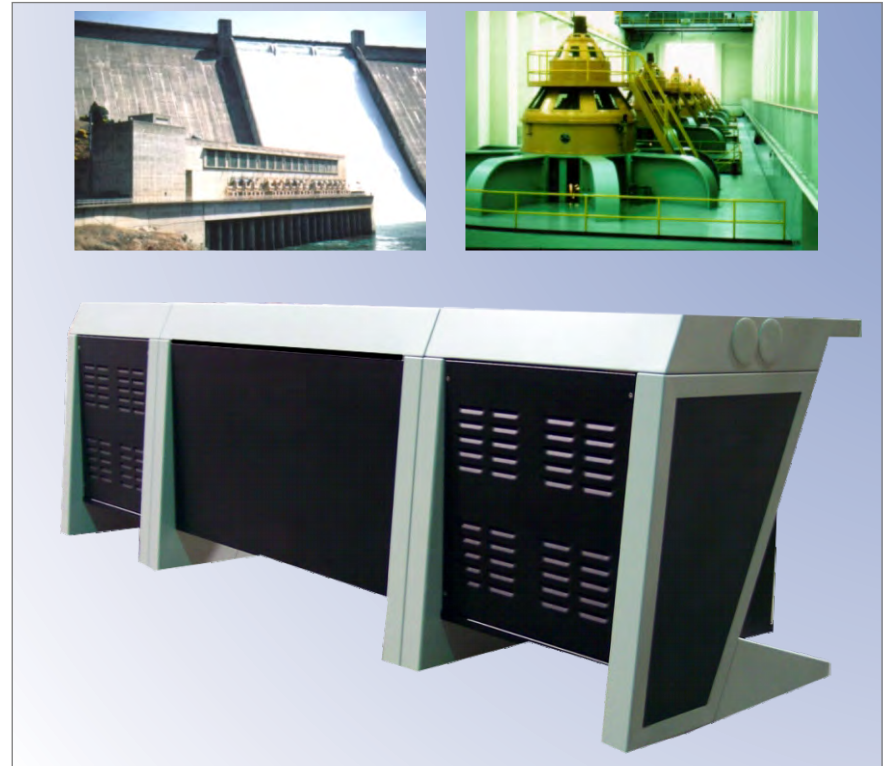


6in. Rear Cabinet Extensions were provided to accommodate additional EIA rack mounted equipment onto deep EIA Rail sets in back of each cabinet

## Limited Floor Space? Stubby Worksurface Console Tables & Desks Can Fit!



Note: EIA Rack Cabinets on each end of console contain 11U of mounting space

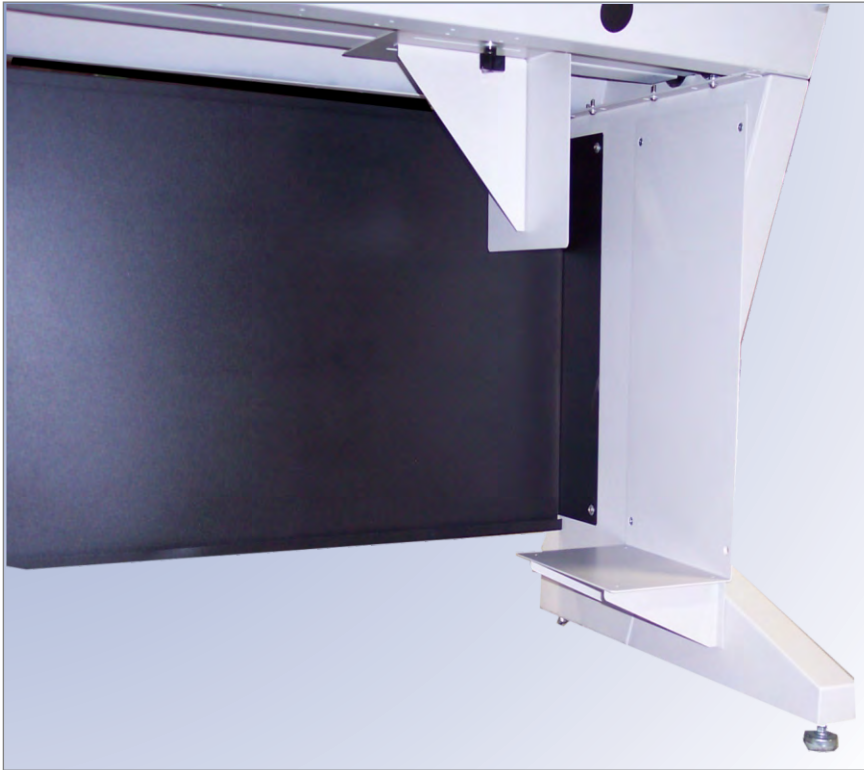


All console units have stubby worksurfaces and removable louvered rear panels for easy access to EIA rack mounted equipment



**U.S. Department of the Interior**  
Console Furniture Expansion for Bureau of Reclamation  
Keswick & Shasta Dams Upgrades on Lake Shasta

## CPU Shelf & Retainer Assembly for Computer Console Tables



GR800116 - CPU Tray and Retainer Assemblies can be installed on left or right side (or both) of table console furniture units



Note: Knob on Retainer Slide allows easy adjustment to fit a variety of CPU sizes

## Available in Seated or Standing Style Operator Workstations



26in. wide seated LoPro Control Console  
4in. deep controls enclosure mounted on adjustable tilt/pivot knuckle



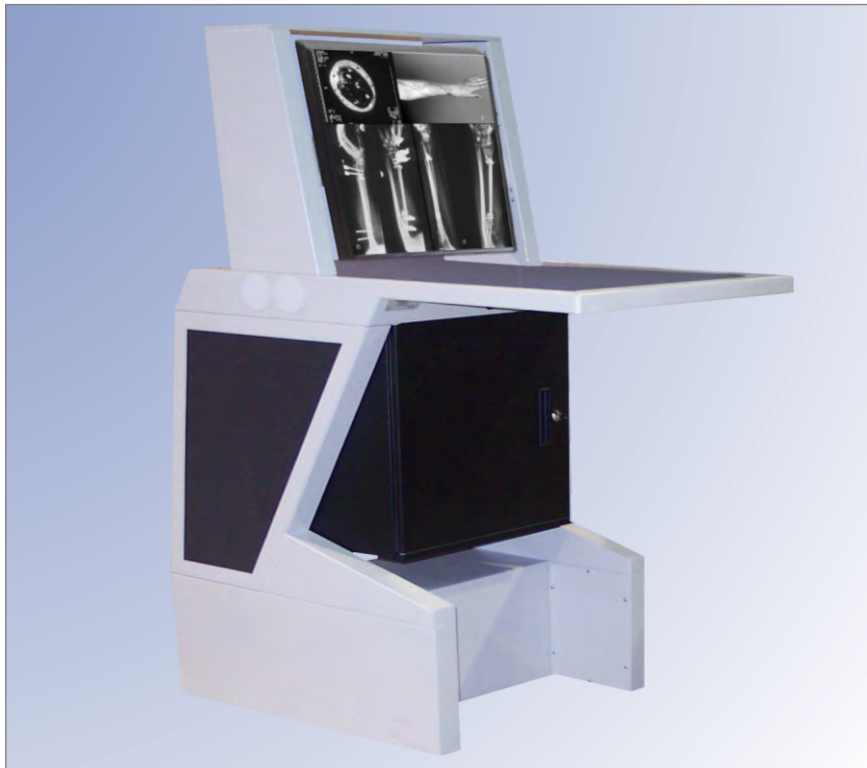
Standing Operator Workstation  
created by adding 12in. high riser base to standard console units



## LCRA Fayette Power Project - La Grange, TX

Seated or Standing Operator Workstations  
Coal Car Dumper Main Control Room Operators Console

## Walk Up Height or Standing Style Computer Console Furniture



26in. wide computer furniture  
units also available on 12in. Riser Base



Standing style computer console furniture  
created by adding 12in. high Riser Base to standard console units

# AgileVIEW®

 **ImageVision**  
*Modular Consoles®*

[www.imagevisionconsoles.com](http://www.imagevisionconsoles.com)



Printer Desks and  
Credenzas with Stubby Worksurfaces



LoPro Console for max visibility over screens  
Matching 19in. EIA Rack Cabinet; floor and desktop mounted available



**Global Lubricants**

**Chevron-Texaco Lubricants - Beaumont, TX**

Control Room Furniture  
Hydrocarbons Blending Consoles

## Homeland Security Console Furniture



Security Console furniture shown includes (2) 48in. LoPro Console units with large screen displays, File Drawer Credenzas with matching laminate tops, and (4) EIA Accessory Garages with 3.5U rack space each



Note: All screens and equipment shown are simulated examples for illustration purposes only



## Texas Governor's Mansion - Austin, TX

Security Console Furniture  
Governor's Protection Security Detail Command Post; Prior to 2009 Updates

## Control Room Furniture for Power Generation



Burgundy Matrix Laminate Inlay  
in desktops and side legs is available at standard pricing



Electric Power Generation  
is our second largest served market



**Constellation Energy - Baltimore, MD**  
Control Room Furniture Desk  
Steam Turbine Control in Electric Power Generation

## Command Center Console with Large LCD Display



Controls Enclosure, 4in. Deep  
located in middle 26in. wide unit above



NASA Glenn Research Center is comprised  
of more than 150 buildings dedicated to research



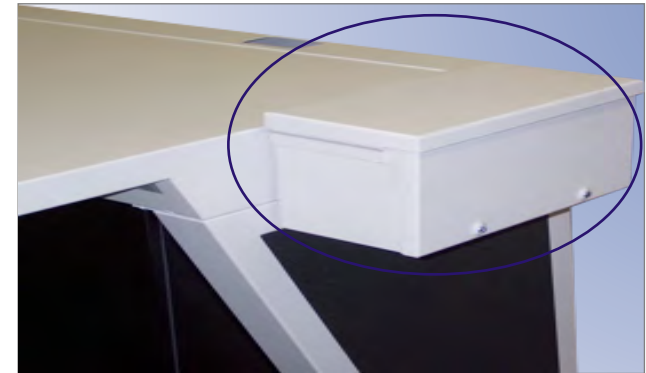
**NASA Glenn Research Center - Cleveland, OH**

Command Center Console  
Aeronautics and Space Test Facilities Building

## Factory Installed Hoffman Conduit Entry Box on 2-Tier Desk Console



Left end unit is a catalog number AG-48D-1ERS-DMS  
A 48in wide Desk Console with 1-Tier Equipment Riser Shelf and Dual Monitor Supports



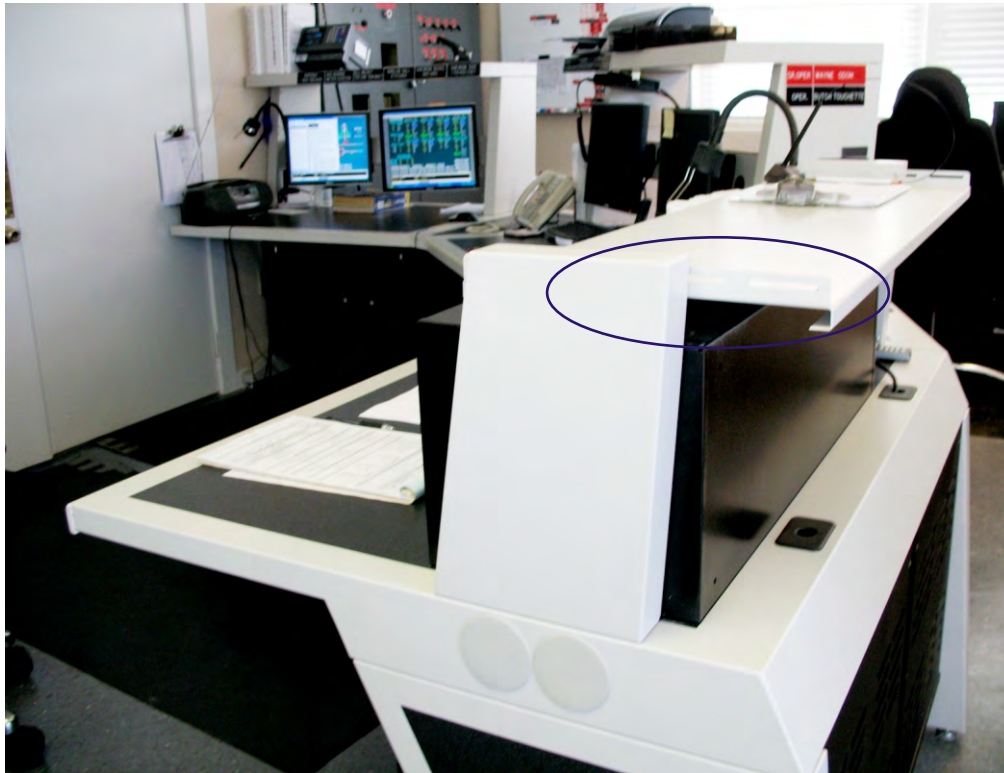
Factory mounted conduit entry box shown closed in top photo  
Hoffman box opened in lower shot shows horizontal wire way access



## Fortune 100 Company - Unidentified Location

Desk Console in DCS Furniture Application  
Process Instrumentation and Control System Operations Unit

## Control Room Furniture with Writing Surface and Gooseneck Tasklight Option



Customer needed writing surface to be accessed from rear of console (PN# GR800040).  
No monitor supports were required below writing surface allowing room for Paper Organizer



Top photo shows Equipment Riser Shelf with screen supports  
Bottom photo shows Keyboard Drawer and Tasklight options



**VALERO Pipeline, L.P. - Beaumont, TX**  
Control Room Furniture  
Crude Oil Tanker Unload Pipeline - Fannet Terminal

## Why Do Electric Utilities Choose ImageVision Control Room Consoles? Reliability!



Integral cable management is standard throughout all of our modular control room console units, desktops and in all monitor tiers



Electric Power Generation is our second largest served market



**Autoridad de Energía Eléctrica - Cayey, Puerto Rico**  
1-Tier Modular Control Room Console  
Electric Power Generation Control Room Operations

## 48 in. 1-Tier Computer Console Used in Aerospace Medical Research for NASA



3in. High Accessory Garage located below LCD screens  
computer console cabinet was supplied with 19in EIA Equipment Racks



Example of our medical imaging & diagnostic furniture based on  
our AgileVIEW<sup>®</sup> open monitor style computer console furniture design



**Naval Aerospace Medical Research Lab - Pensacola, FL**

Computer Console Furniture  
Final Installation at NASA - Houston, TX

## Control Console in Steel Mill Caster Pulpit



Control Console Units are comprised of Single Tier Equipment Riser Shelves with Dual Monitor Supports below each shelf allowing space for other equipment



- Custom Controls Console in corner for mounting push buttons, switches and other control devices



**Severcorr, LLC - Columbus, MS**  
Control Console Application in Steel Mill  
Caster Pulpit Console

## Control Room Console Furniture for Electric Power Generation



Note that a controls consolette was added on the 45 Degree Wedge to allow for the addition of pushbuttons, control switches and meters



Most of the consoles in this project were supplied with Equipment Riser Shelves and Dual Monitor Tilt/Pivot Supports to allow for the addition of printers above screens

## Ergotron Double-Extension Monitor Mounts Add Ergonomic Flexibility



Equipment Riser Shelf is equipped with two Ergotron Double-Extension Monitor Mounts to allow for maximum user adjustment of screen positions.



Task Lighting can be added to either/both sides of command center consoles keyboard and mouse can be located on work surface or on pull-out tray below

**GENERAL DYNAMICS**  
C4 Systems

**General Dynamics C4 Systems - Scottsdale, AZ**

Command Center  
Telecommunications Command Console U.S. Navy/Pacific

## Security Furniture and Control Console with Turret



1-Tier Turrets with custom front panel cut outs are available on both 26in and 48in width security control consoles. Turrets have Riser Shelf Tops for Printers, etc.



Louvered Rear Turret Panel and security control console cabinet rear panels



## Mobile Command Center Console with Shock Mount Feet



1-Tier EIA Rack Turrets (3 X 11U Rack Space)  
Console Furniture 74in. Wide with Common Center Rear Leg on Shock Mount Feet



Console Turrets Have Louvered Rear Panels  
Cable Access with Grommets to All Integral Wireways



**BAE SYSTEMS - Ft Walton Beach, FL**  
Mobile Console Furniture with EIA Turrets & Shock Mount Feet  
Mobile Radar Tracking Console for US Air Force

## Many EIA Rack Options for our Modular Consoles



20U of EIA Rack space in cabinet on work surface;  
11U of space behind any door position along console lineup

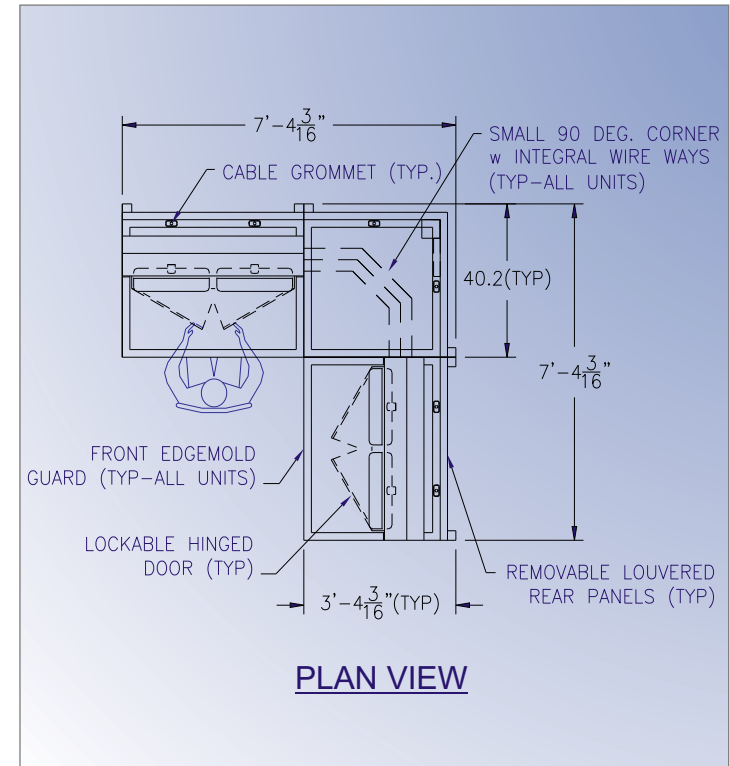


Freestanding EIA Rack cabinets have  
numerous options and can be painted to match your consoles

## Industrial Computer Furniture includes Small 90 Degree Corner with Cable Management



Qty 2 48in 2-Tier Industrial Computer Furniture  
Operator Console Units with 90 Degree Corner Table, Small



We have Modular Console Units  
to Fit Your Floor Space & CAD Drawings for Every Project

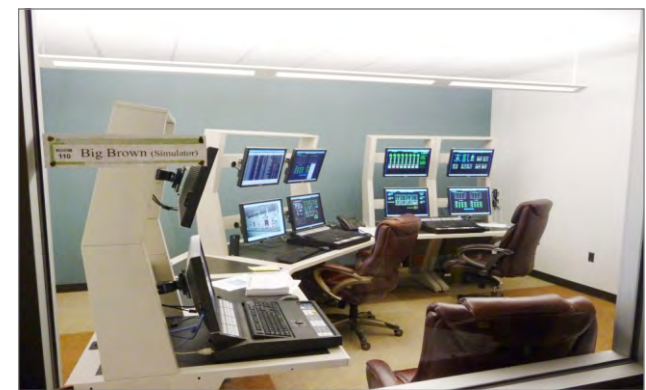


**TAMCO Roofing Products - Knoxville, TN**  
Industrial Computer Furniture  
Paper Mill Operations Command Console

## 2-Tier Training Simulator DCS Workstation Consoles



26in and 48in wide 2-Tier Training Simulator  
Consoles as used in the Luminant Training Center



DCS Keyboard below  
right hand screens in upper photo



## Large Screen Operator Consoles in Command Center



Large Screen Display on Tier-2 with 5in  
Tier 1-2 Extension for optimal screen separation



Use turn angles or wedges for  
auxiliary equipment such as printers, phones, and radios



**Los Angeles County Sanitation District - Commerce, CA**

Public Utilities Operator Consoles  
REFUSE to ENERGY Project Command Center

## 2-Tier Lab Furniture in Advanced Test Reactor Research Facility



AG-48D-2 console units  
in "U" shaped layout using 45 degree Wedges



ATR Complex in lower photo  
Inside photo from the ATR facility in upper photo

## Need Special Colors? No Problem! Black To Hide Carbon Dust



26in Wide Control Room Furniture Unit  
on left above has Equipment Riser Shelf for CRT support

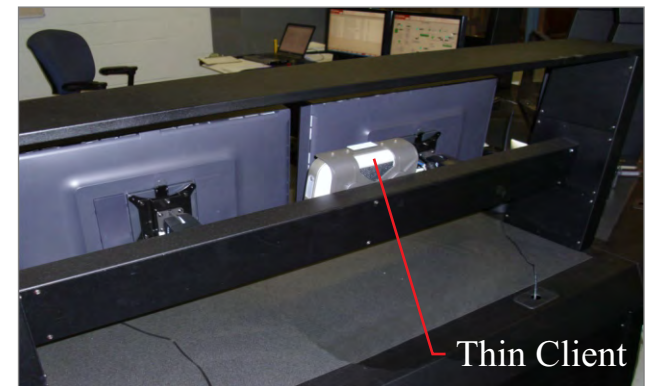


Removable Rear Wireway Covers allows easy access to Integral  
Cable Management System; note Audio Speakers on Tier-2 of Unit Above

## 26 in. 2-Tier Console, All-Black wih Thin Clients Mounted Behind Screens



90 degree corner turn in the DCS Operator Console above utilizes a 26in wide 2-Tier unit with 45 degree wedges on each side. Note this arrangement allows room for phones and radio



In upper right Thin Clients are mounted to the horizontal support rail behind screens; rear view of screens just above

FORTUNE  
1000  
COMPANY

## Large Beverage Processor - Confidential Name & Location

DCS Console Upgrade also utilized Allen-Bradley PLC's in Utilities Control Room to replace Honeywell TDC2000 system

## Want Lower 2nd Tier Screens? Ask About Our Monitor Knuckle Repositioner Option



Knuckle Repositioners are available as field retrofit kits: IV# Gr800121 and are easily added to your existing 2-Tier console units; either 48 or 26in.



Simply remove your existing console tilt/pivot monitor knuckles, install the Gr800121 Kits and reattach the knuckles to the repositioner slides

## Equipment Riser Shelf with Single Screen Support; Dual Supports Also Available



Equipment Riser Shelves come with a variety of options for LCD monitor support; single (as above), double, or none at all



Equipment Riser Shelf is 17.5" D and can accommodate many printers and binder storage with bookends

Note the flexibility of the Equipment Riser Shelf on the left end. It can easily accommodate printers, CRT's and LCD displays as well as binder storage

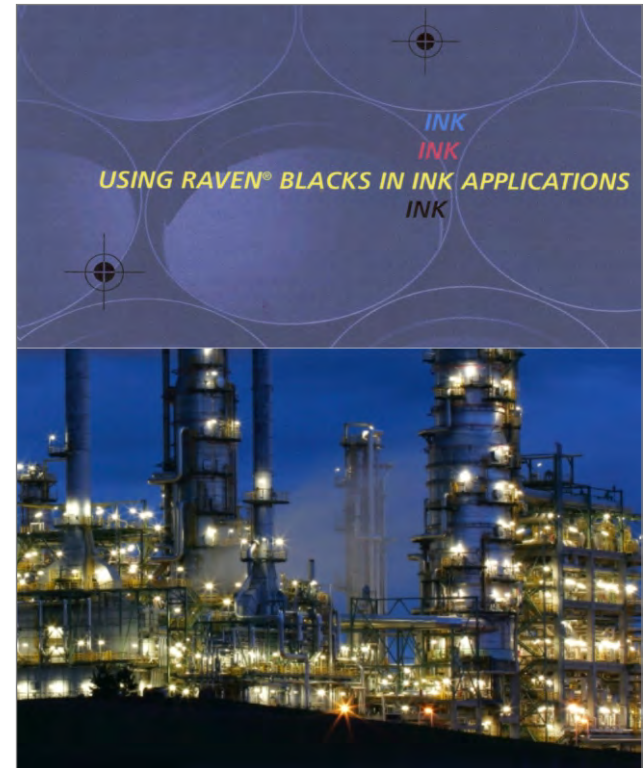


**Wheaton Sanitary District - Wheaton, IL**  
SCADA Control Room Console Furniture  
Water Waste Water Treatment Facility

## Operator Console Furniture for Continuous Process Control



AgileVIEW 2-Tier  
consoles in all Gothic Black



Control room console furniture  
built to last in continuous process control application



**Columbian Chemicals - Marietta GA**  
Operator Console Furniture for Control Room Applications  
Marshall Plant Main Control Room - Moundsville, WV

## European Space Agency - Galileo Project Satellite Tracking & Testing Consoles



The European Union Galileo program calls for a high-quality satellite-navigation service to be fully in place by 2013. Galileo will help improve the availability and accuracy of GPS data.



GIOVE-B above, the 2nd of 30 satellites planned was launched in April 2008 from Kazakstan

## Industrial Consoles in Gas Processing Plant



Control Room Design Assistance was provided at no charge. Several options were explored with detailed AutoCAD drawings provided in order to meet operations requirements in U-shaped layout.



Consoles shown provided without monitor knuckles  
Custom enclosure Tier-1 for three 17in ELO touch screens



**Whiting Oil & Gas - Wickett, TX**  
Industrial Consoles  
Main Control Room Operator Console

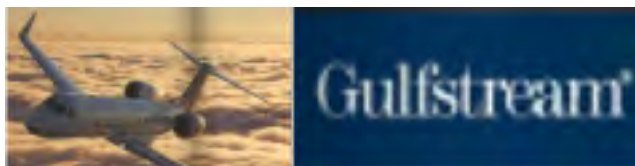
## Need Console Furniture for Widescreen Displays? 24in Dell Monitors



2-Tier Console Furniture Unit on Left with  
Dell Model 2407W3Y 24in Widescreen Monitors



Controls Enclosures on Tier-2 of Console Unit  
on Right End of Line Up for Flight Simulator Controls



**Gulfstream Aerospace Corp. - Savannah, GA**  
Console Furniture  
Flight Simulator Control Console

## Back-to-Back U-Shaped Industrial Control Consoles



2-Tier Cement Plant Industrial Control Consoles  
with matching 72in Wide Work Table with Pencil Drawers



Louvered Rear Panels are standard on Cabinets  
Note Turn Angles have ample room for additional equipment



**California Portland Cement Company - Colton, CA**  
Industrial Control Consoles  
Cement Plant Central Control Room Operations

## All Black 2-Tier Industrial Console Furniture with Large Screen Displays on Tier-2



Large Plasma Mount Options on Tier-2  
Note conduit entrances made at the tops of Tier-2 vertical supports



Horizontal wire ways behind screens have removable rear panels to allow easy access to cable routing from upper tiers into cabinets below



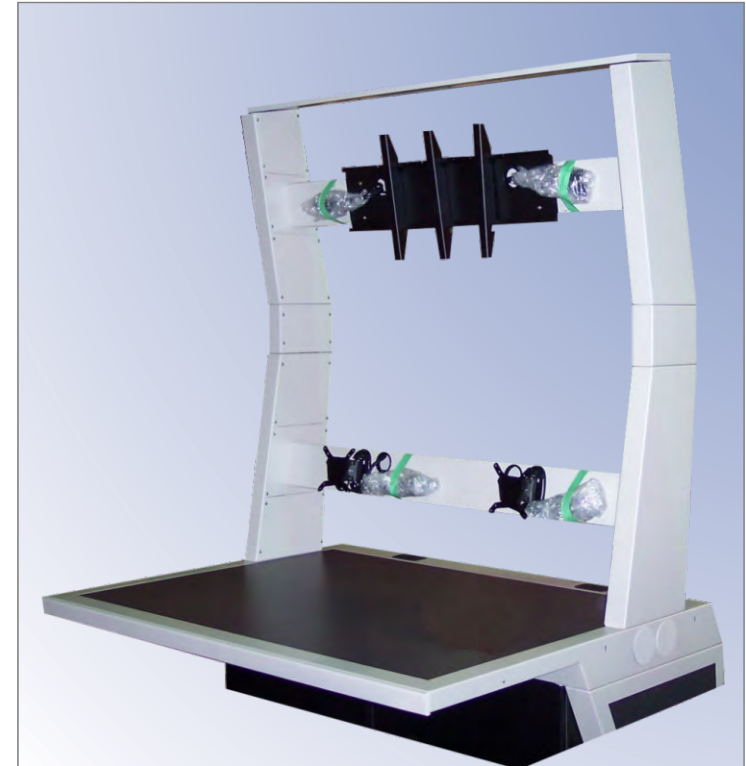
## Large Chemical Processing Facility - Confidential Location

Industrial Console Furniture  
Console Unit Name/Facility Location is Confidential

## Tier1-2 Extension Set & Universal Monitor Mount for Large Screen Displays

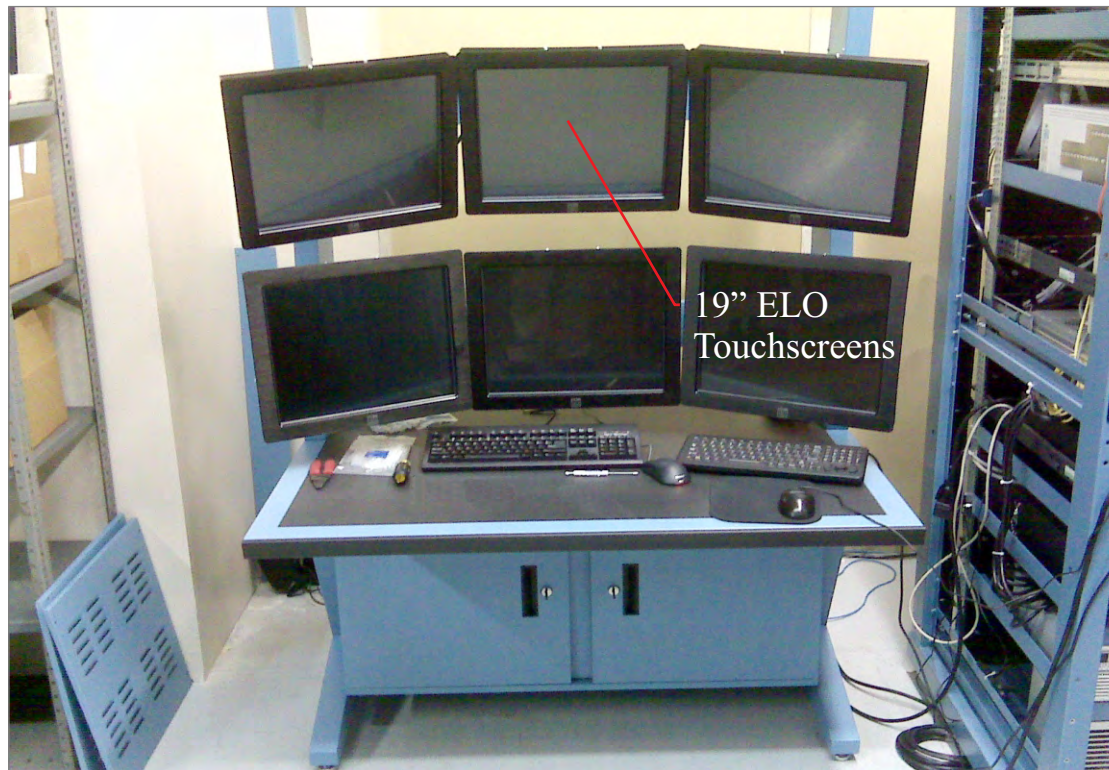


Note: Tier Extension Set added between Tiers 1 & 2 to accommodate large LCD  
Both 5in and 10in Extension Sets are available for Screen Sized to 60in Diagonal

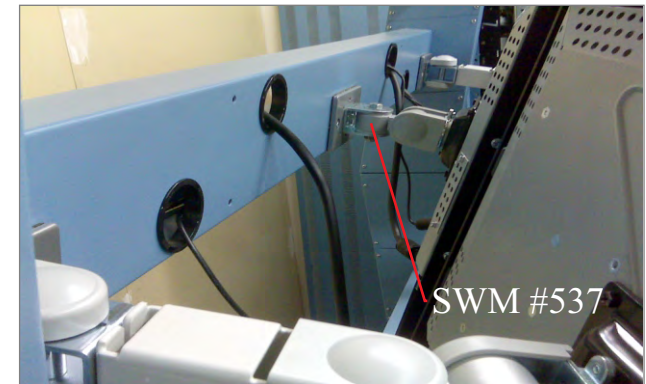
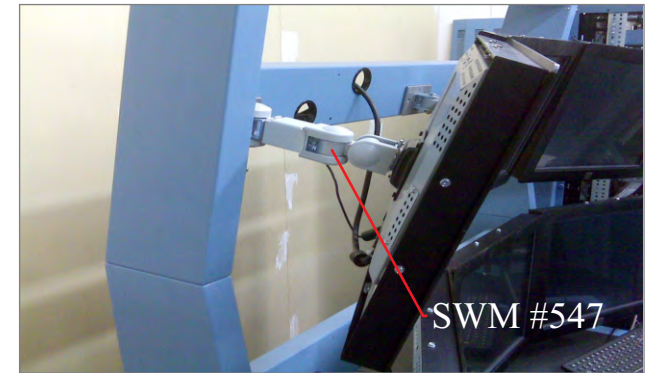


Before installation: GR850010 - Universal Monitor Bracket, Fixed  
is mounted on Tier 2; for Screens up to 48in Diagonal in size

## Technical Furniture with 3 LCD Screens per Tier on CyberResearch Monitor Mounts



Custom SOE Color Powder Coat Finish  
RAL 5024 Pastel Blue to match EIA Equipment Rack



CyberResearch SWM #547 Quad-Pivot; Outside Mounts  
SWM #537 Triple-Pivot Monitor System; Center/Inside Mounts



## Operator Console Tiers with Optional Privacy Panels



2-Tier Power Plant Operator Consoles  
with Privacy Panels - note cable access on back



Locking Rear Doors and Louvered Front Panels  
available as an option at no additional charge



**Louisville Gas & Electric - Louisville, KY**  
Control Room Operator Consoles with Screen Privacy Panels  
Cane Run Generating Station Control Room

## Two-Tier Control Room Console with Privacy Panels



Privacy Panels behind LCD screens  
reduce operator distraction for high-traffic areas



Privacy Panels available for  
all tiers in both 26in. and 48in. console widths

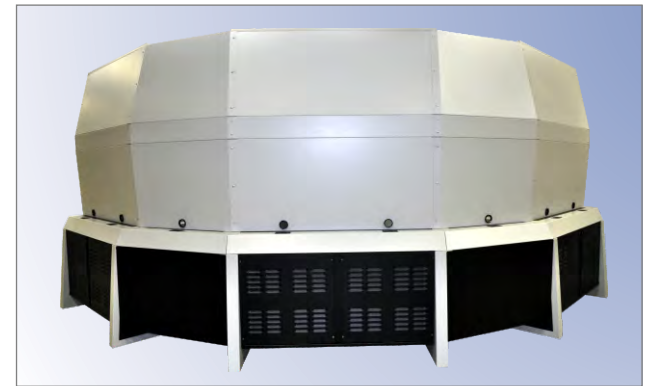
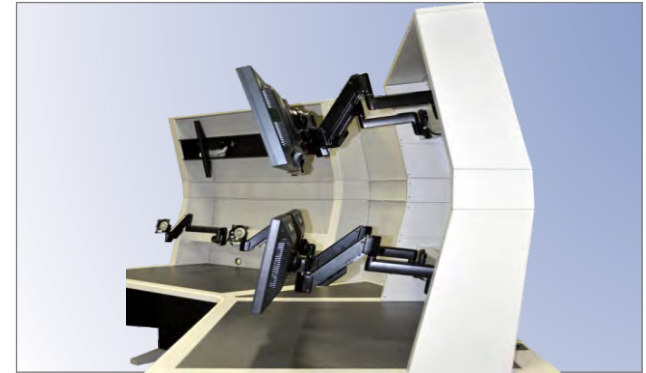


**INEOS Olefins & Polymers NA - Clute, TX**  
Control Room Console  
Stratton Ridge Control Room

## Privacy Panels for Monitor Tiers and Wedges with Chief Dual Extension Monitor Arms



Privacy Panels are available for monitor tiers, tier risers (used with large screens), and wedges. New Wedge Modesty Panels are included to enclose the operator stations in both front and rear views



Control Room Console cabinets supplied with removable Louvered Rear Panels for equipment ventilation



**Architect of the Capitol - Washington, DC**

Control Room Console Furniture  
Undisclosed Unit Name & Facility Location

## Command and Control Consoles - Marine Furniture for Shipboard Applications



Command and Control Console on 12in. Riser Base with Shock Mount Feet  
Louvered Front Door with 6in. Cabinet Extension for large DVR and AIS equipment



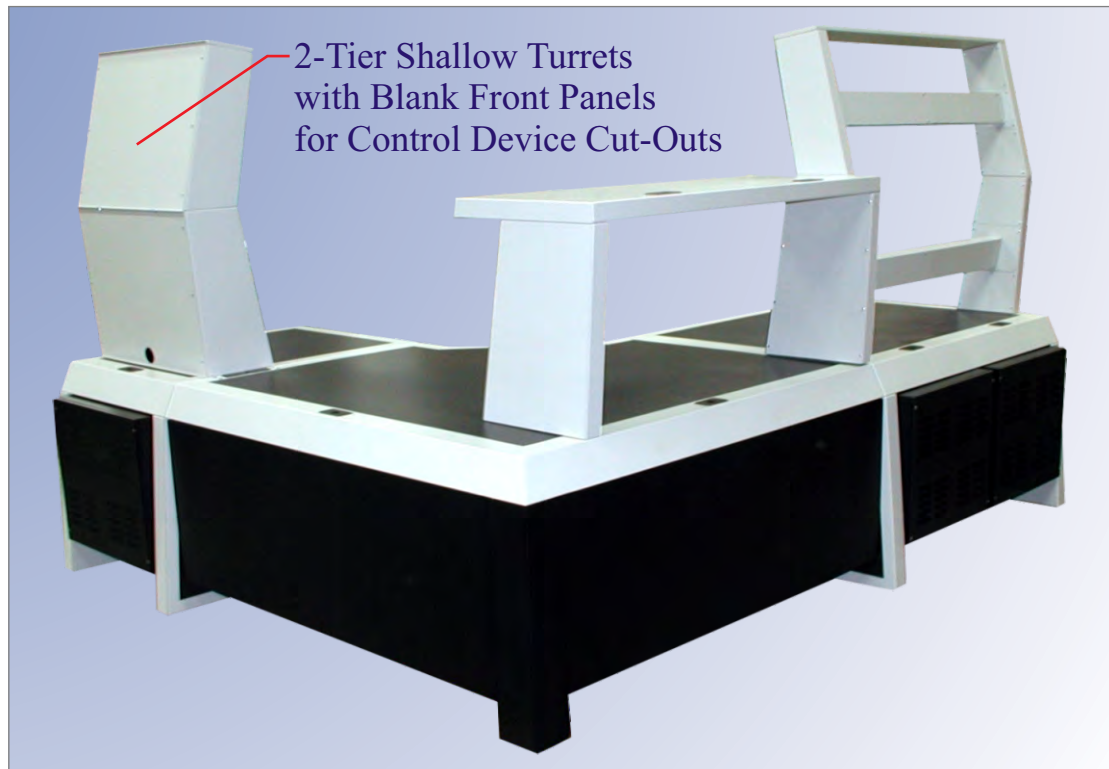
Water Side Security  
HarborGuard System Configuration Diagram



**L-3 Communications/Klein Associates, Inc. - Salem, NH**

Marine Furniture - Command and Control Consoles - Anti-Piracy Shipboard Consoles  
HarborGuard Integrated Waterside Security and Surveillance System Console

## 26in. 2-Tier Shallow Turret and Equipment Riser Shelf on Large 90 Degree Corner



Shallow Turrets are available  
on both 26in. and 48 in. width consoles



Let us simplify your control room design; we  
can supply custom cutouts on front panels for field devices



**INEOS Olefins & Polymers - Alvin, TX**  
Cogen Unit Operator Consoles  
A4 Control Room/Chocolate Bayou

## Showcase Control Room Furniture - All Black Powder Coat Finish



Project included Tier Spanner Shelves on Tiers 1, 2 & 3 tops for storing 3-ring binders, tag printers, and documents. Cabinets below work surfaces have front mounted extensions & louvered panels



3-Tier 45 Degree Wedge Turrets, Shallow Depth  
for HMI Workstations on each side of 48 in. monitor tiers



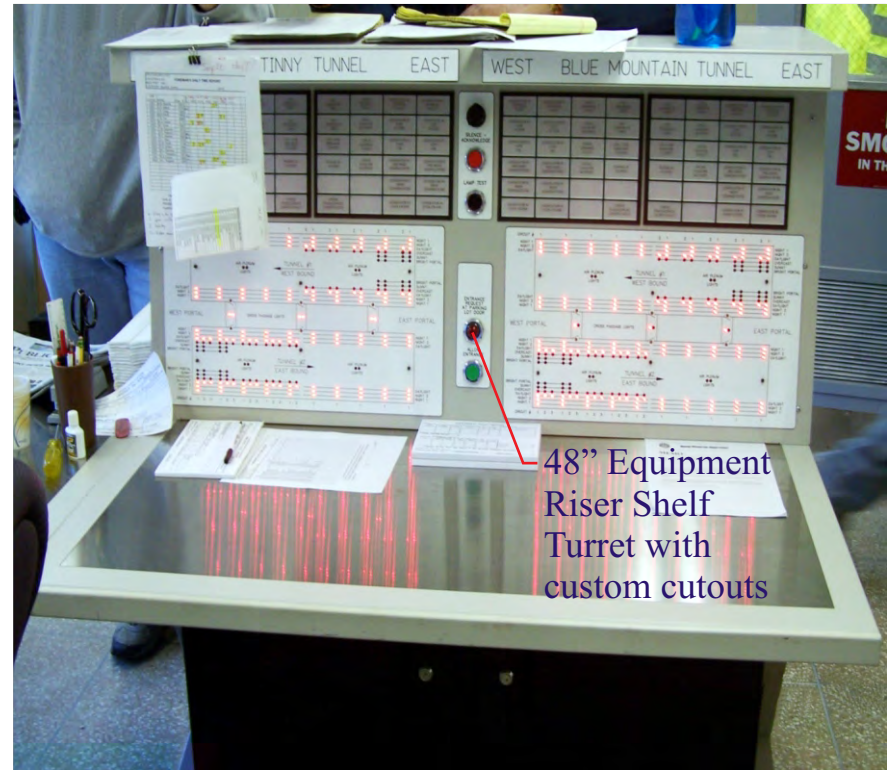
## Chemical Processing Facility - Pasadena, TX

Control Room Furniture  
AA/BA Main Control Room with HMI Workstations

## 3-Tier Security Console Furniture with 1-Tier Turret Console



We can supply EIA Rack Cabinets or Turrets to match your security console furniture requirements



Turret options are available either with EIA Rack front panels or with custom cutouts



**Optimum Controls Corp - Reading, PA**  
Security Console Furniture  
Install - Pennsylvania Turnpike Authority Tunnel Security

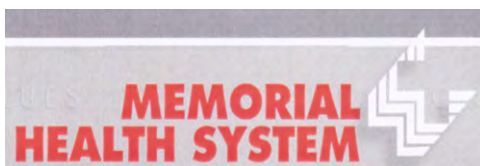
## Hospital Security Console Furniture and EIA Rack Cabinets



Standard 2-tier consoles with 3rd-tier screens  
field-installed by customer to top of consoles; two EIA Rack Cabinets



Links to articles regarding  
our security console furniture installations



**Memorial Medical Center - Springfield, IL**  
Security Console Furniture  
Access Control/Multi-Facility

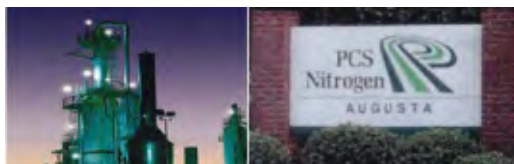
## DCS Furniture - Operator Control Console: Modularity After Initial Installation



Modular control console construction  
for ease of modification to meet future needs



Portions of this project initially installed  
as 1 and 2 tier units; console modularity allowed easy expansion



**PCS Nitrogen Augusta, GA**  
DCS Furniture and Operator Control Consoles  
Fertilizer Production Operator Control Console

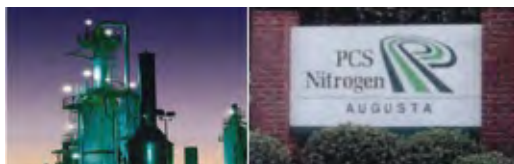
## DCS Furniture - Operator Control Console: 2 and 3-Tier 48 in. Units



Note KVM switches mounted under lower front edge of worksurface



Adequate room under first tier screens to store keyboards, phones, calculators, etc

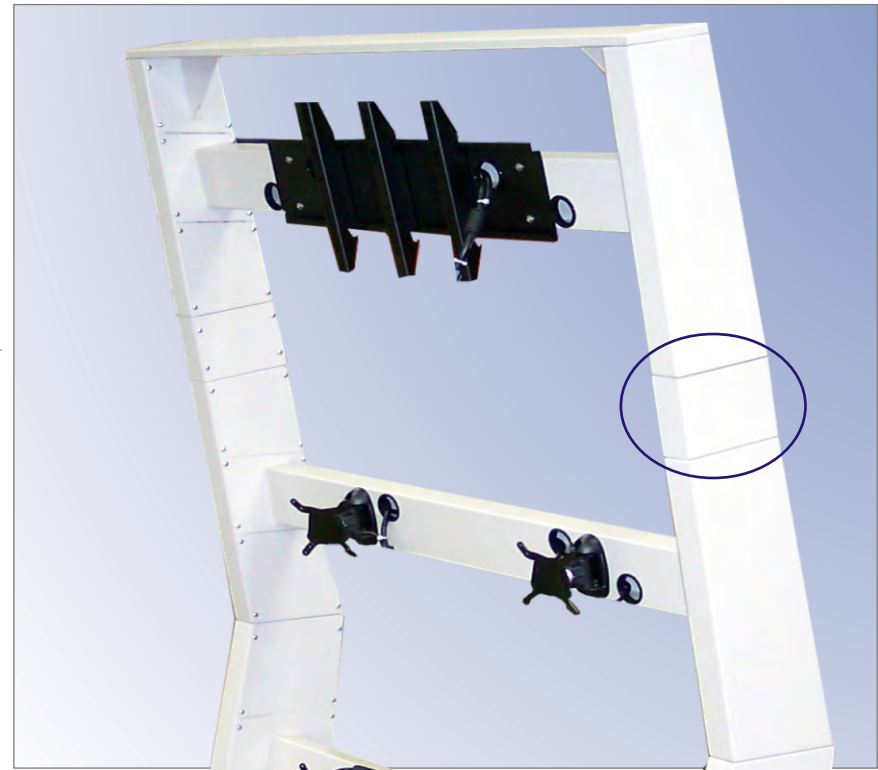


**PCS Nitrogen Augusta, GA**  
DCS Furniture and Operator Control Consoles  
Fertilizer Production Operator Control Console

## Large LCD Screen Display on Tier - 3 of Modular Console Furniture



46in. LCD screen was elevated  
above tier - 2 with 5in. Biscuit Riser option



Note: in photo on left,  
ample room remaining to add LCD's on tier - 2

## Operator Consoles for Large Screen Displays with Equipment Sub-panels in Cabinets



Need a place to  
mount your:

- PLC's or Rack CPU's
- I/O Modules
- Power Supplies
- Ethernet Hubs
- DIN Rail Relays
- Terminal Blocks
- Fuse Blocks, Etc?

**We have the answer!**

Ask about our  
EIA Racks and  
Equipment Sub-panels



Note customer chose to omit our Ergotron Dual Pivot Monitor Mounts  
to add his own pushbutton stations in two screen positions on Tier 1 above

EIA Rack for DVR & network modules in top left side cabinet;  
Equipment Subpanels provided behind each cabinet door in lower photo



**Polaris Automation for Lockheed Martin - Sunnyvale, CA**  
Operator Consoles for Tiered Large Screen Displays with EIA Racks & Equipment Sub-panels  
Vaporizer System Console

# AgileVIEW®

**ADDITIONAL  
CONSOLE OPTIONS**

**— *See NEW Options Album* —**

# Product Catalog

AgileVIEW - Series 2  
with Adjustable Height Monitor Supports

Complete  
Ergonomic Control Console Solutions  
with Reduced Height Tiers for Wide Screen Displays  
[Learn more...](#)

SINGLE OR DOUBLE TABLE TOPS

SITTING OR STANDING HEIGHT

ADJUSTABLE PRESETS

Motorized for ERGONOMIC ADJUSTMENT

Working Environment FLEXIBILITY

Operator CONVENIENCE

Laminated Table Tops   Powder Coat Finish   Task Lights   Phone Shelf   Integral Cable Management  
Computer Shelf Options   Power Outlets   Slide-out Keyboard Trays   Battery Power Options   Monitor Arms  
Drawers   Control Enclosures   Bookcases   Slide-Out Trays   Sub-Panels   EIA Equipment Racks

• **Control Rooms**   • **Security Furniture**   • **Command Centers**   • **Medical Imaging Solutions**

## Single Top in 26 or 48 Inch Widths



Features reduced height monitor tiers and CHIEF KWP130B Tilt/Pivot monitor mounts with built-in height adjustment slide

Offers a 5 inch range of vertical motion for each screen position

Portrait/landscape rotation or anywhere in 360 degrees of rotation

Mounts feature CHIEF's patented Centris technology for easy finger tip control of screens

Quick release screen adapter plate features a tear drop hole pattern for fast and easy mounting of flat screen displays

Independent adjustment of all tension points allow screen positions to be customized and adjusted for touchscreen applications

[Watch Video Demo...](#)

Our Most Flexible Modular Control Room Consoles

## Other Related Products

Ergonomic 24-Hour Rated Chairs from Pinnacle Seating

[learn more...](#)

Monitor Arms and Desk Stands from Ergotron

[learn more...](#)

Monitor Arms and Desk Stands from CHIEF

[learn more...](#)

LumiVision X-Ray Viewers from Point A

[learn more...](#)

Vista X-Ray Illuminators from Point A

[learn more...](#)

S&S X-Ray Illuminators

[learn more...](#)