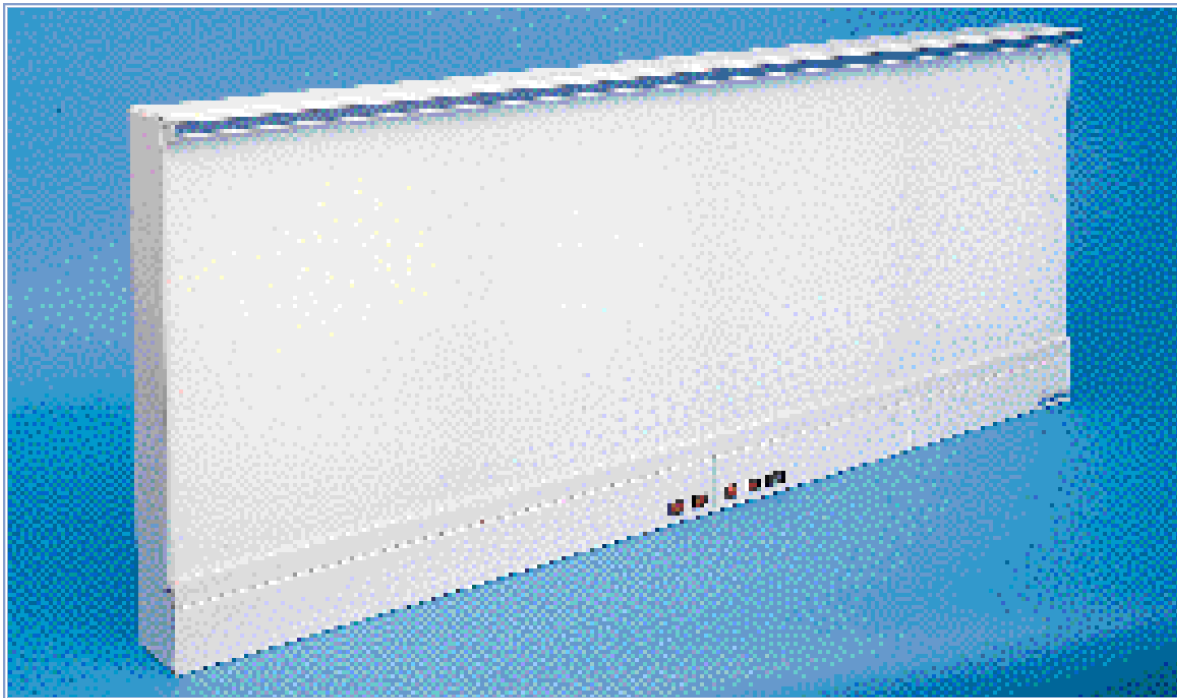


CHAMELEON SERIES

Blends With Any Décor



Four Bank Surface Mounted Model (101204)

The **Chameleon Illuminator Series** combines a slim, sleek appearance (3³/₈" depth), with color-customizable trim. This cost efficient illuminator is designed to accentuate the warm, professional appearance of your reading room or consultation area. The units can be highlighted with *trim in a choice of ten colors*, polished stainless steel or primed strip (the latter can be easily painted to color coordinate within a facility). Constructed of durable steel with a white powder-coat finish, this series is available in 2 lamps, 3 lamps and 4 lamps per viewing area models.

Trigger start ballasts, separated viewing sections, centered cluster switches, one piece plexiglass fronts and continuous gravity film grips are standard with this series. A bottom ledge film support coupled with the continuous film grip guarantees maximum freedom for viewing small or large films. Each section is individually controlled by rocker switches mounted at the bottom center of the illuminator. Master switches are provided on units of three banks or more. The Chameleon Illuminator can also be incorporated into a corner module.

Trim Colors

S&S Blue	Sandstone Beige	Sliprock Grey	Target Red	Buttercup Yellow
Dusty Rose	Agean Blue	Caribbean Teal	Winter Spruce	Blue Ridge



Finish: White Baked Enamel

Electrical: Viewers operate on 120 volt, 60 Hz. **2 Lamp Series:** .47 amps per section, **3 Lamp series:** .61 amps per section, **4 Lamp series:** 1.0 amps per section. Surface mounting models are supplied with a 6' three conductor line cord (see diagram for wiring locations). Recessed models come with BX connectors. For special voltages consult factory.

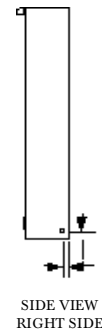
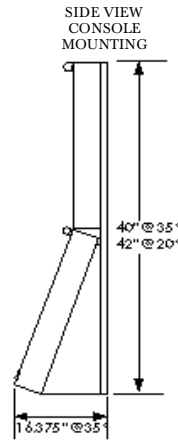
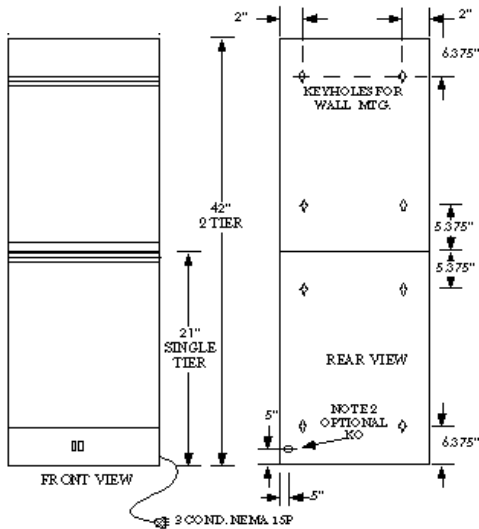
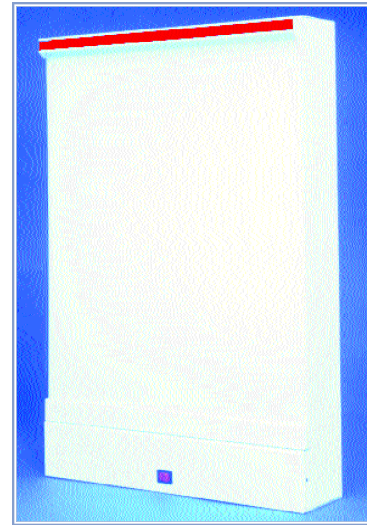
* **Optional Items:** Modular Mobile system (pg B-23), mobile stand, console arms, angulated viewing system (pg B-25) corner modules (pg B-24), hospital grade plugs (pg B-30).

CHAMELEON SERIES

ILLUMINATORS

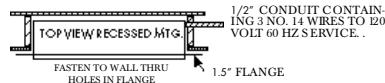
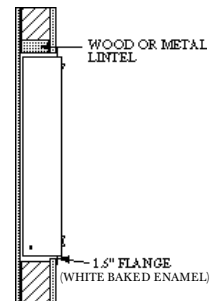
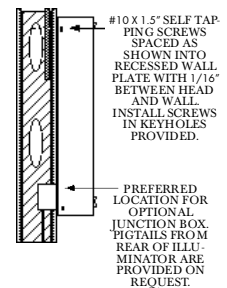
SURFACE MOUNTED MODELS

VIEWING AREA	EXTERIOR DIM		APPROX SHIP WT	101 SERIES TWO LAMP		101 SERIES THREE LAMP		101 SERIES FOUR LAMP	
	WIDTH	HGT		STANDARD SWITCHES	AUTO SWITCHES	STANDARD SWITCHES	AUTO SWITCHES	STANDARD SWITCHES	AUTO SWITCHES
Single Bank 14"x17"	14"	21"	23 lbs	101201	101221	101301	101321	101401	101421
Two Bank 28"x17"	28"	21"	46 lbs	101202	101222	101302	101322	101402	101422
Three Bank 42"x17"	42"	21"	69 lbs	101203	101223	101303	101323	101403	101423
Four Bank 56"x17"	56"	21"	90 lbs	101204	101224	101304	101324	101404	101424
Five Bank 70"x17"	70"	21"	113 lbs	101205	101225	101305	101325	101405	101425
Six Bank 84"x17"	84"	21"	136 lbs	101206	101226	101306	101326	101406	101426
TWO TIER									
1 over 1 2 x 14"x17"	14"	42"	46 lbs	101211	101231	101311	101331	101411	101431
2 over 2 2 x 28"x17"	28"	42"	92 lbs	101212	101232	101312	101332	101412	101432
3 over 3 2 x 42"x17"	42"	42"	138 lbs	101213	101233	101313	101333	101413	101433
4 over 4 2 x 56"x17"	56"	42"	180 lbs	101214	101234	101314	101334	101414	101434
5 over 5 2 x 70"x17"	70"	42"	226 lbs	101215	101235	101315	101335	101415	101435
6 over 6 2 x 84"x17"	84"	42"	272 lbs	101216	101236	101316	101336	101416	101436



RECESSED MODELS

VIEWING AREA	EXTERIOR DIM		WALL OPENING		APPROX SHIP WT	101 SERIES TWO LAMP		101 SERIES THREE LAMP		101 SERIES FOUR LAMP	
	WIDTH	HGT	WIDTH	HGT		STANDARD SWITCHES	AUTO SWITCHES	STANDARD SWITCHES	AUTO SWITCHES	STANDARD SWITCHES	AUTO SWITCHES
Single Bank 14"x17"	14"	21"	14.25"	21.25"	23 lbs	101241	101261	101341	101361	101441	101461
Two Bank 28"x17"	28"	21"	28.25"	21.25"	46 lbs	101242	101262	101342	101362	101442	101462
Three Bank 42"x17"	42"	21"	42.25"	21.25"	69 lbs	101243	101263	101343	101363	101443	101463
Four Bank 56"x17"	56"	21"	56.25"	21.25"	90 lbs	101244	101264	101344	101364	101444	101464
Five Bank 70"x17"	70"	21"	70.25"	21.25"	113 lbs	101245	101265	101345	101365	101445	101465
Six Bank 84"x17"	84"	21"	84.25"	21.25"	136 lbs	101246	101266	101346	101366	101446	101466
TWO TIER											
1 over 1 2 x 14"x17"	14"	42"	14.25"	42.25"	46 lbs	101251	101271	101351	101371	101451	101471
2 over 2 2 x 28"x17"	28"	42"	28.25"	42.25"	92 lbs	101252	101272	101352	101372	101452	101472
3 over 3 2 x 42"x17"	42"	42"	42.25"	42.25"	138 lbs	101253	101273	101353	101373	101453	101473
4 over 4 2 x 56"x17"	56"	42"	56.25"	42.25"	180 lbs	101254	101274	101354	101374	101454	101474
5 over 5 2 x 70"x17"	70"	42"	70.25"	42.25"	226 lbs	101255	101275	101355	101375	101455	101475
6 over 6 2 x 84"x17"	84"	42"	84.25"	42.25"	272 lbs	101256	101276	101356	101376	101456	101476



ALL MEASUREMENTS ARE ± 1/16"